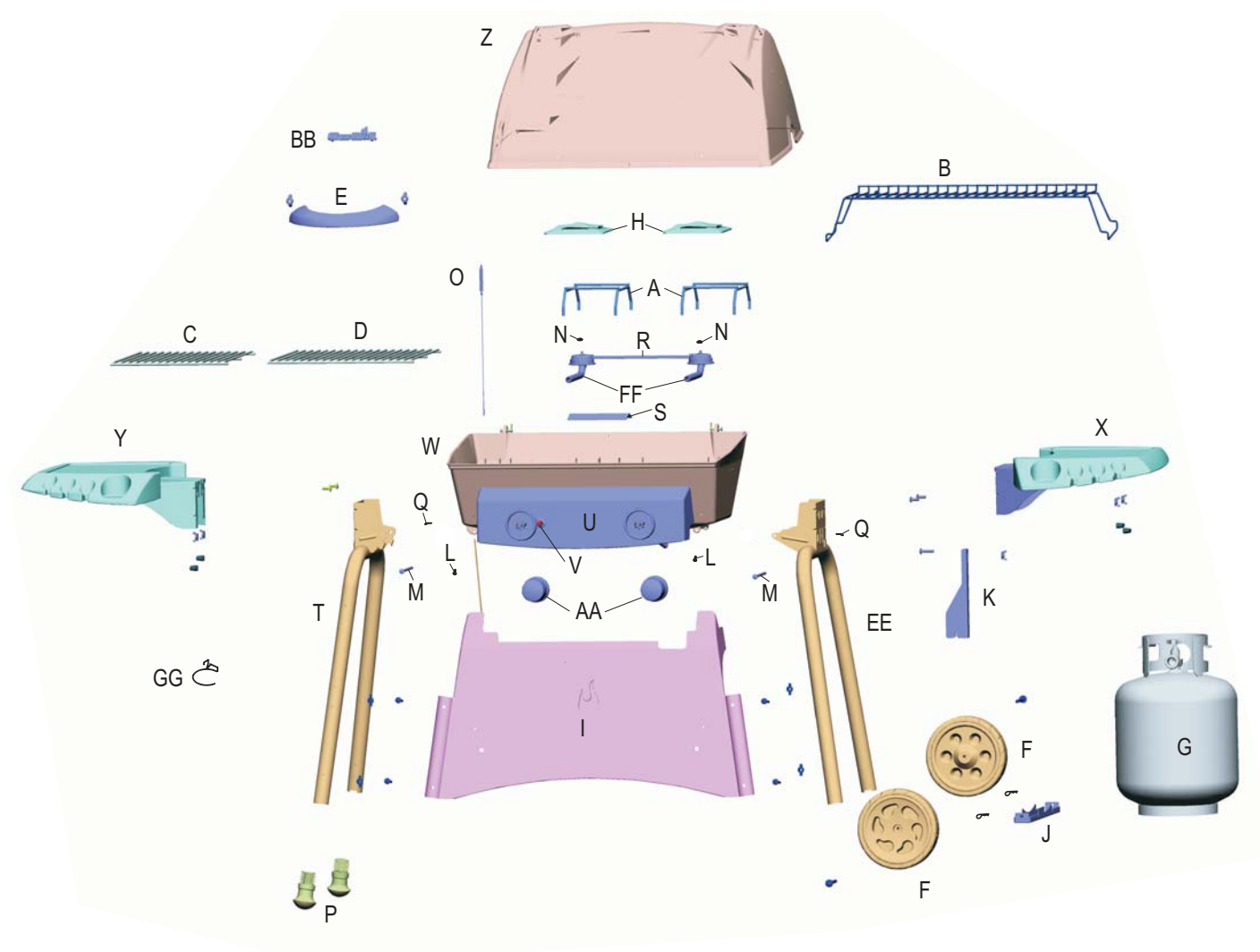


**Parts List - Model 4638213**

Key Qty.	Description	Part #
A 2	Tent Frame	4151014
B 1	Warming Rack	4152043
C 1	Cooking Grid, 12"	4152045
D 1	Cooking Grid, 15"	4152046
E 1	Handle	4154488
F 2	Wheel	4156957
G 1	LP Tank	4158015
H 2	Burner Tent	4500226
I 1	Upper Panel	4502072
J 1	Tank Support	4502098
K 1	Tank Retainer	4502113
L 2	10x1/2" Screw, Self-tap	4080043
M 2	Pivot Pin	4080066
N 2	3/16 Pal Nut	4153096
O 1	Ignitor Wire	4153184
P 2	Leg Extender	4154516
Q 2	3/4" Hitch Pin	4156515
R 1	Carry-over Tube	4500227
S 1	Heat Shield	5501038
T 1	Left Leg	4502194
U 1	Console Assembly	4530058
V 1	Ignitor	4153713
W 1	Grill Bottom	4580316
X 1	Right Shelf Assembly	4520011
Y 1	Left Shelf Assembly	4520012
Z 1	Grill Top	4580144
AA 2	Control Knob	4154507
BB 1	Logo Plate	4157147

Key Qty.	Description	Part
CC 1	Hardware, Cart Assy.	4254008
DD 1	Hardware, Shelf	4254010
EE 1	Right Leg	4502161
FF 2	Burner	5068016
GG 1	Grease Clip	5156607



**NO TOOLS REQUIRED**

**the Big Easy**  
 THE GRILL THAT COOKS  
**BREAKFAST LUNCH AND DINNER**

**the Big Easy**

4638213  
 ASSEMBLY MANUAL



**THIS GRILL IS FOR OUTDOOR USE ONLY**

**CAUTION:** Read and follow all safety statements, assembly instructions, and use and care directions before attempting to assemble and cook.

**INSTALLER/ASSEMBLER:** Leave these instructions with consumer.

**CONSUMER:** Keep this manual for future reference.

**WARNING**

Failure to follow all manufacturer's instructions could result in serious personal injury and/or property damage.

**CAUTION**

Some parts may contain sharp edges – especially as noted in the manual! Wear protective gloves if necessary.

If you have any questions or need assistance during assembly, please call 1-800-241-7548.

Visit us on the web at:  
[www.charbroil.com](http://www.charbroil.com)

